



# 33 DVI / Cypress Driftwood Log Set Installation Instructions (sku 94500562)

## Packing List

- Log Set
- Platinum Crushed Glass (in 2-portion bag)
- Bronze Crushed Glass (in 2-portion bag)
- Cobalt Crushed Glass (in 2-portion bag)

## Installation Warnings

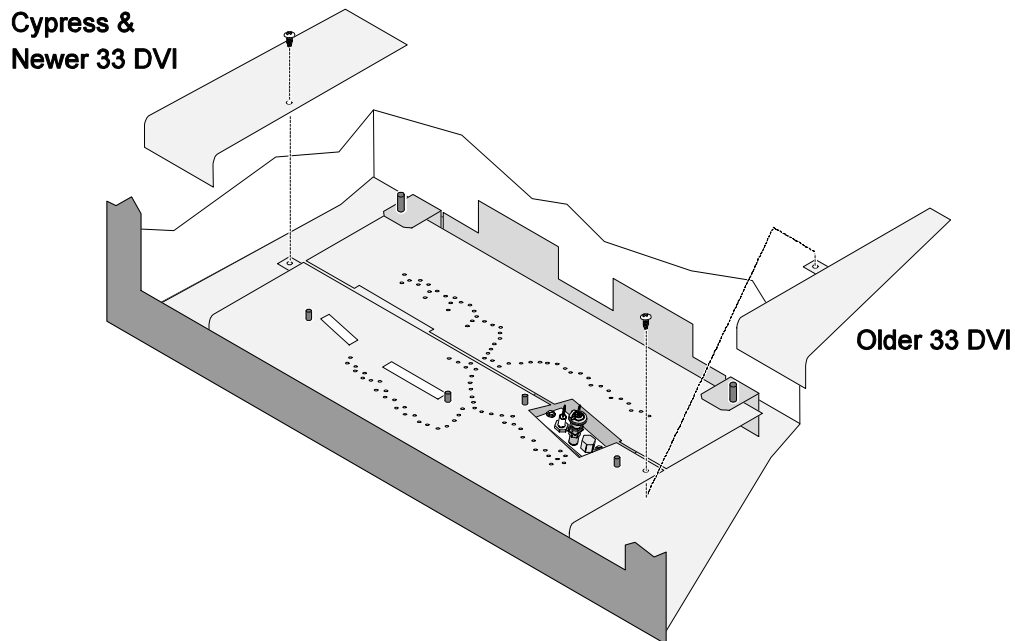
- **The logs are fragile, especially after being exposed to heat.**
- Make sure the gas control valve is “OFF” and the heater is cool prior to conducting service.
- Failure to position the parts in accordance with these diagrams or failure to use only parts specifically approved with this appliance may result in property damage or personal injury.
- The burner must be correctly positioned before installing the log set. Make sure the burner is fully seated and the pilot is properly aligned. See owner’s manual for details on burner removal.

**HINT:** If using propane (LP), convert the appliance before installing the log set.

**HINT:** If using optional firebacks, first make the modifications to the burner (see below). After modifying the burner install the firebacks then the log set.

## **Preparing the Burner for Log Set Installation**

The log set requires the burner to be modified. Remove the two screws holding the ember trays in place (see below). Remove the ember trays.

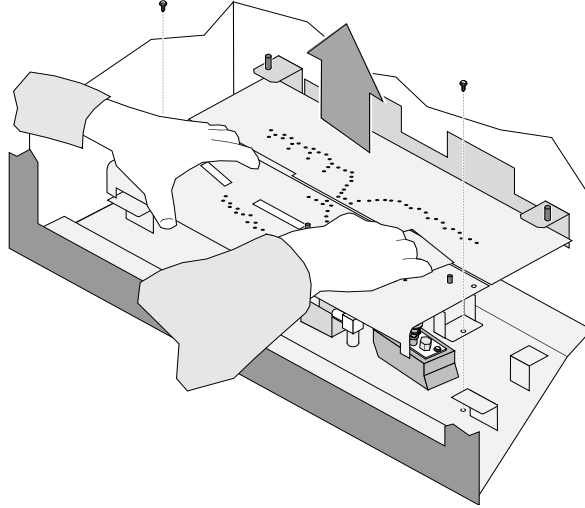




# 33 DVI / Cypress Driftwood Log Set Installation Instructions (sku 94500562)

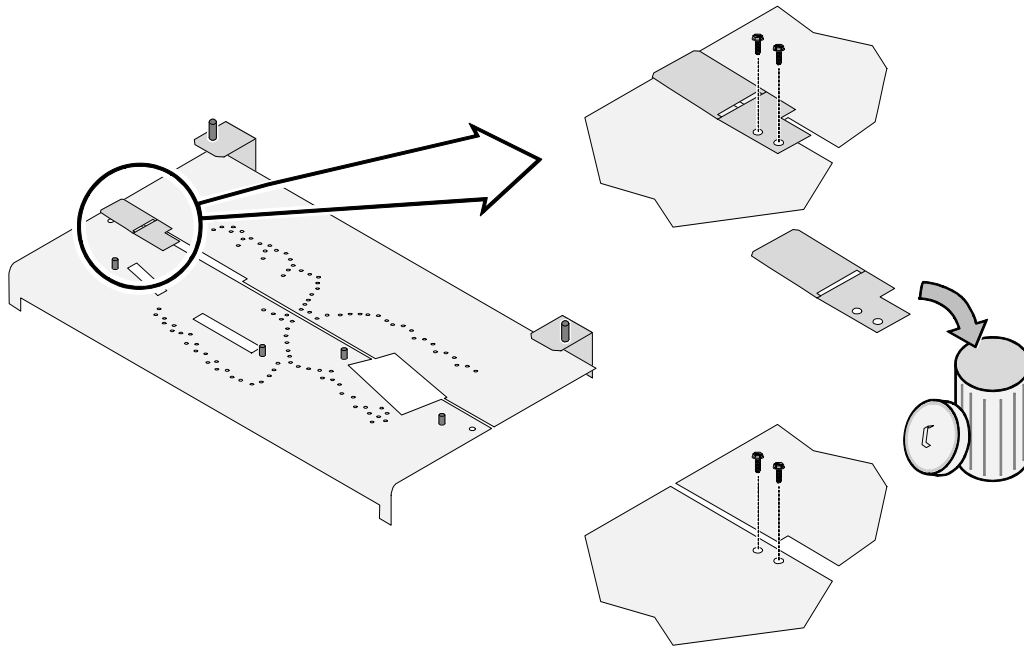
## Preparing the Burner for Log Set Installation (continued)

Remove the two screws holding the burner in place (see below). Grasp the burner with both hands and lift it straight up and out of the firebox. Place the burner on a suitable work surface.



Remove and discard the side air deflector. Replace the screws.

**NOTE:** On older burners the deflector is riveted in place. Simply bend the extension repeatedly until it snaps off.

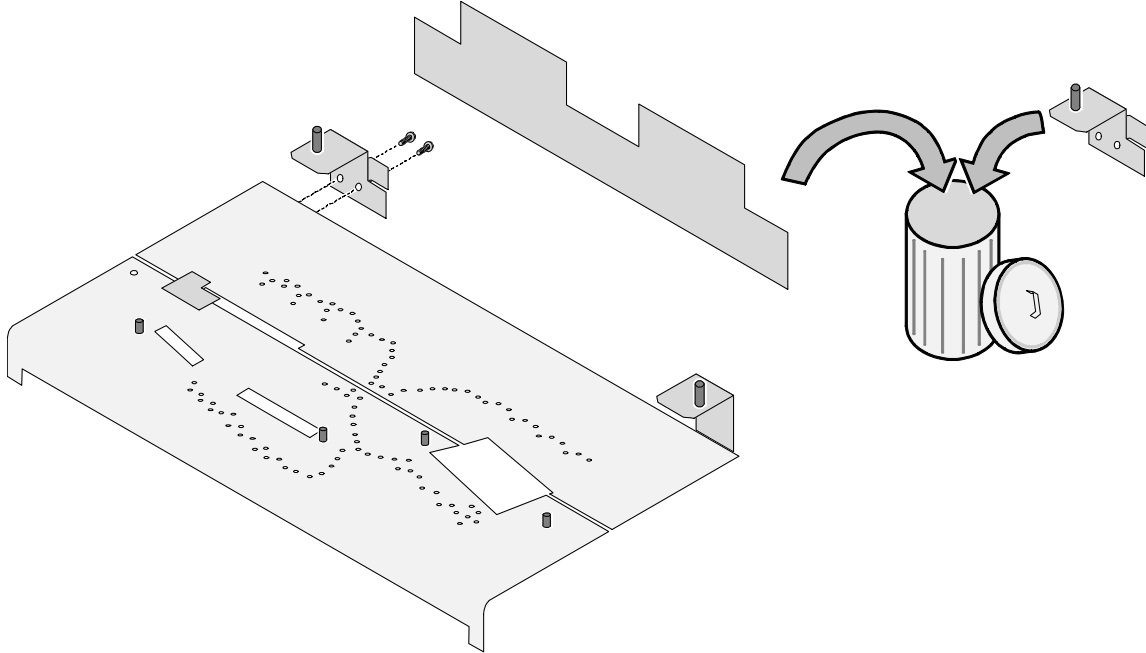




# 33 DVI / Cypress Driftwood Log Set Installation Instructions (sku 94500562)

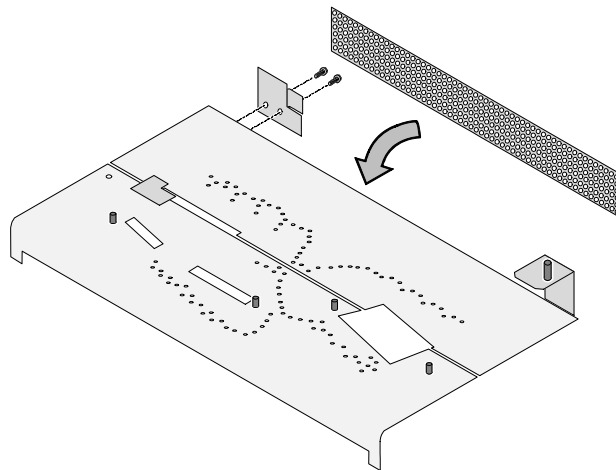
## Preparing the Burner for Log Set Installation (continued)

Remove and discard the left rear log support and rear air deflector.



### Cypress on NG Only

Install the air-deflector bracket and perforated rear air deflector as shown below (make sure perforated air deflector has painted side facing forward). These parts are included with the Cypress.





# 33 DVI / Cypress Driftwood Log Set Installation Instructions (sku 94500562)

## Preparing the Burner for Log Set Installation (continued)

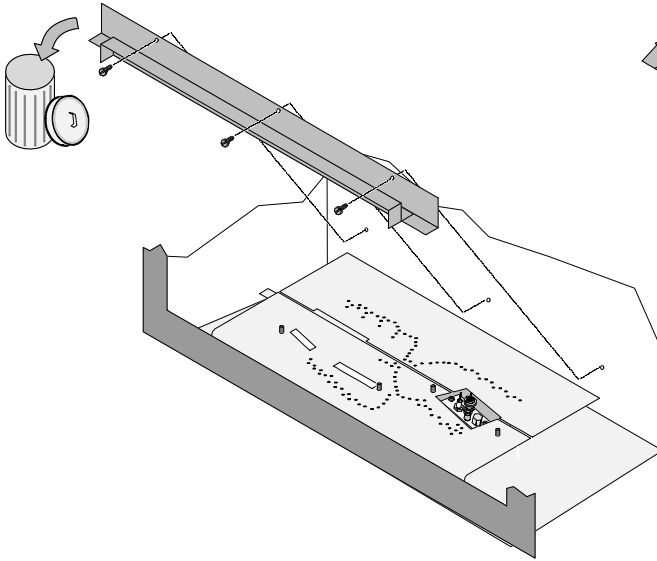
Replace the burner, making sure it is correctly positioned.

### **Cypress Only**

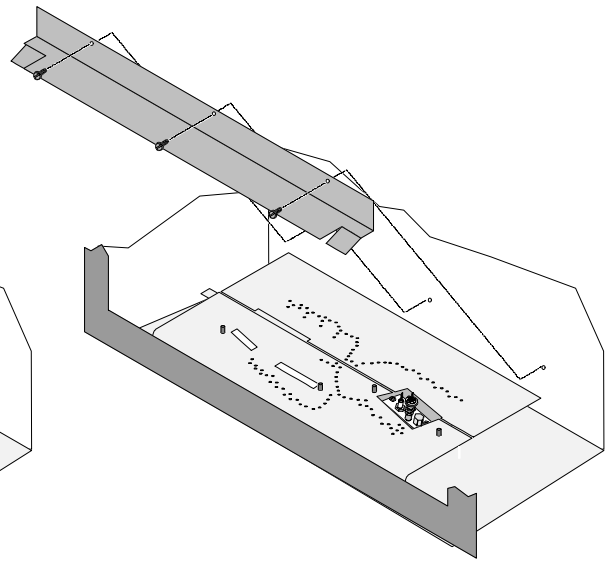
Remove and discard the fireback shelf/high deflector and install the low deflector (included with the Cypress stove).

**FIREBACK NOTE:** If using a fireback, do not remove the low deflector. Place the fireback on the low deflector at the rear of the firebox and secure using the upper clips.

Fireback Shelf/High Deflector



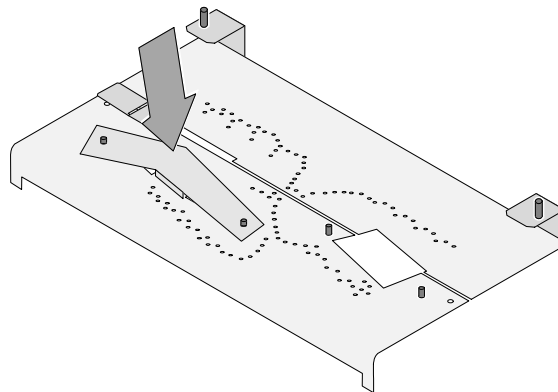
Low Deflector



Replace the ember trays and return the stove to the correct configuration.

### **Left Log Plate**

The left log installs on a steel plate. Older 33 inserts do not have this plate. Make sure the plate is in place as shown below.

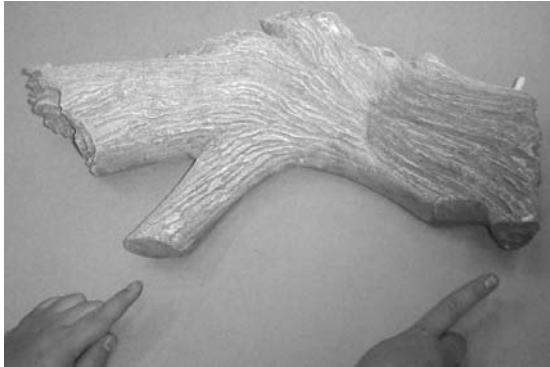




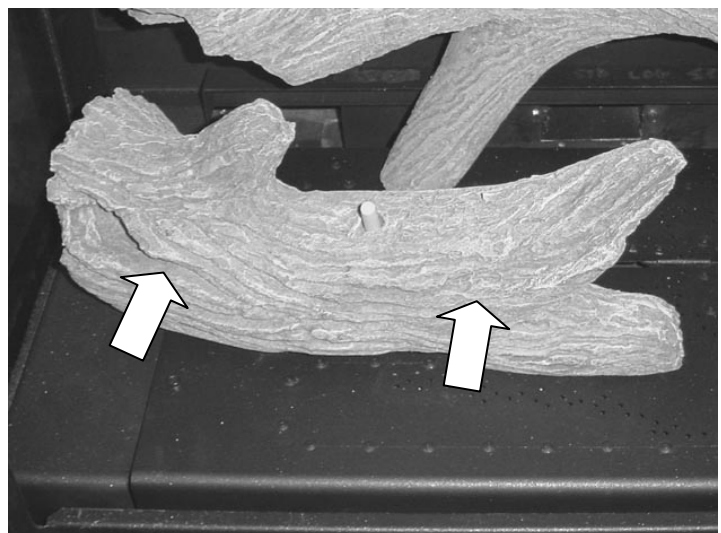
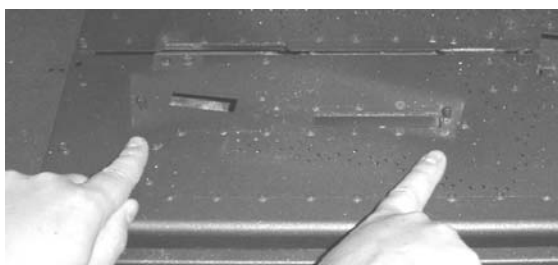
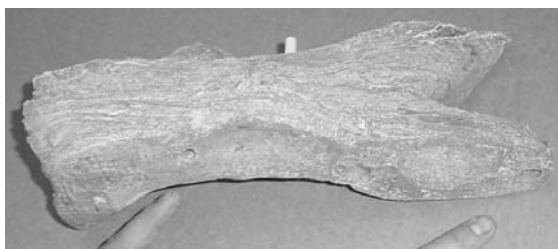
# 33 DVI / Cypress Driftwood Log Set Installation Instructions (sku 94500562)

## Log Set Installation

Place the rear log so the hole on the right side fits over the pin on rear log shelf. The left side rests on the burner. The log rests against the back wall or fireback.



Place the left front log as shown below. Note how the two pins on the burner insert into the holes on the log. Make sure the log is pushed all the way back.





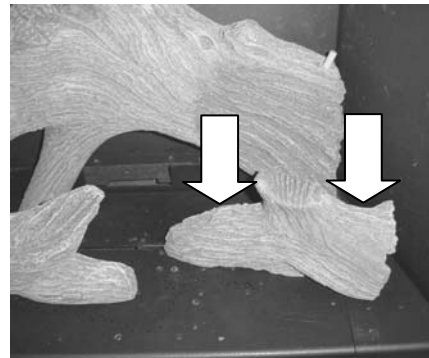
## 33 DVI / Cypress Driftwood Log Set Installation Instructions (sku 94500562)

The right front log as shown below. Note how the two pins on the burner insert into the holes on the log.



### **Special Instructions for Pilot Shield**

Most units have a pilot shield that contacts the bottom of the front right log (older 33 DVI's do not).



Place the log in place and press down on it firmly until the log sits flat (this may indent the bottom of the log). Be careful to not damage the log or press too firmly. When in place, the log should be spaced approximately 3/8" above the burner surface (see photo below). Make sure the pilot is visible and is able to light the burner.



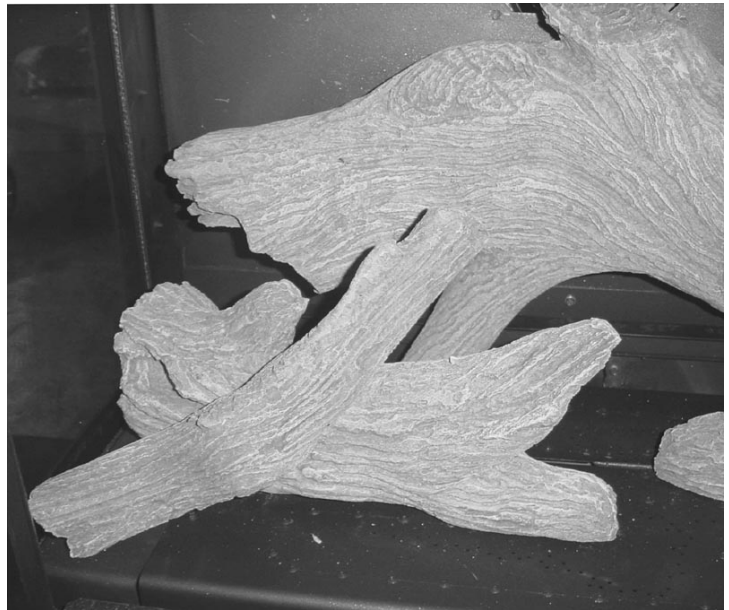
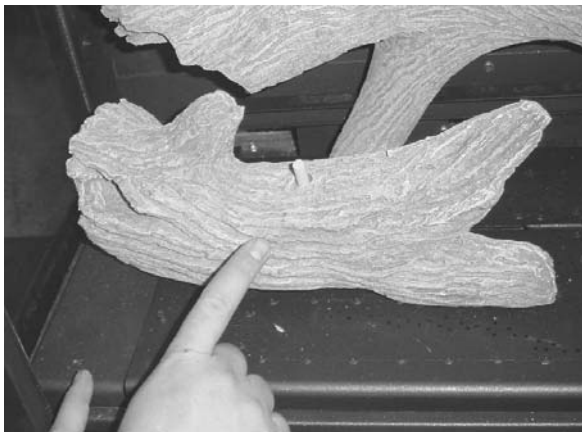


## 33 DVI / Cypress Driftwood Log Set Installation Instructions (sku 94500562)

Place the right twig as shown below. Note how the hole on the twig inserts over the pin on the rear log and rests on the flat portion of the front right log.



Place the left twig as shown below. Note how the hole on the twig inserts over the pin on the left front log and rests on the left ember tray.



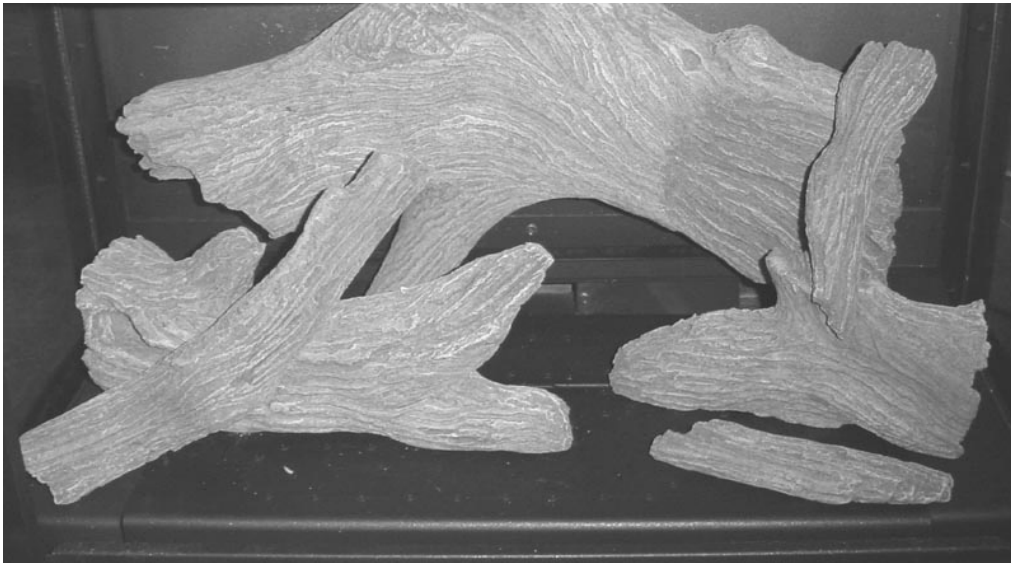
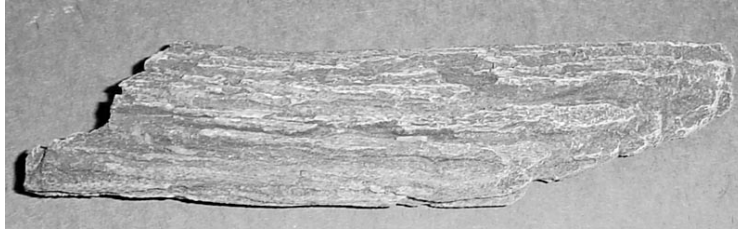


TRAVIS INDUSTRIES  
HOUSE OF FIRE

## 33 DVI / Cypress Driftwood Log Set Installation Instructions (sku 94500562)

---

Place the ember chunk on the burner as shown below. Make sure the ember chunk does not cover any of the burner holes.







# 33 DVI / Cypress Driftwood Log Set Installation Instructions (sku 94500562)

## Crushed Glass Installation

Three colors of crushed glass are included with this set to allow for different shading options. Each color of glass comes in a two-portion bag (labeled "A" and "B") to accommodate the differences between the 33 DVI and Cypress burner.

**33DVI:** Use one only the "A" portion of one bag (the larger portion).

**Cypress:** Use both "A" and "B" portions of one bag.



Pour the crushed glass onto the burner in a thin, uniform layer.



**WARNING:** Make sure the glass is a maximum 1 layer thick (NG can be up to 2 layers). If the glass is too thick it will impair burner performance and create soot.

**WARNING:** Make sure the pilot is not obscured with glass. Clear away glass, if necessary, to insure the pilot flame lights the burner quickly.

