

Compatibility

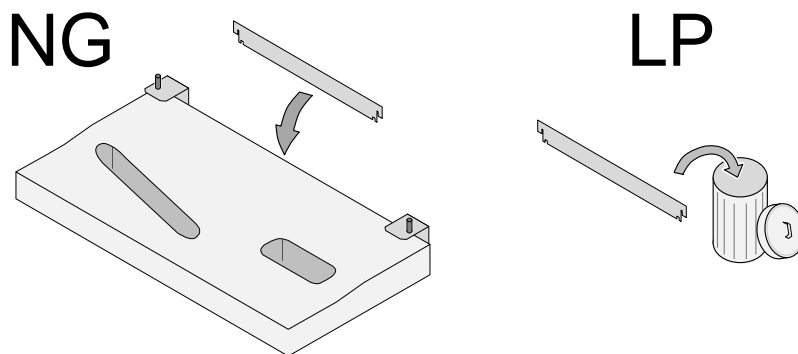
- DVL GSR NB Insert
- DVL GS (AU) Inbuilt

Packing List

- DVL Ember-Fyre Burner Assembly
- 6-Piece Log Set
- Bag of Log Embers
- Bag of Rock Wool

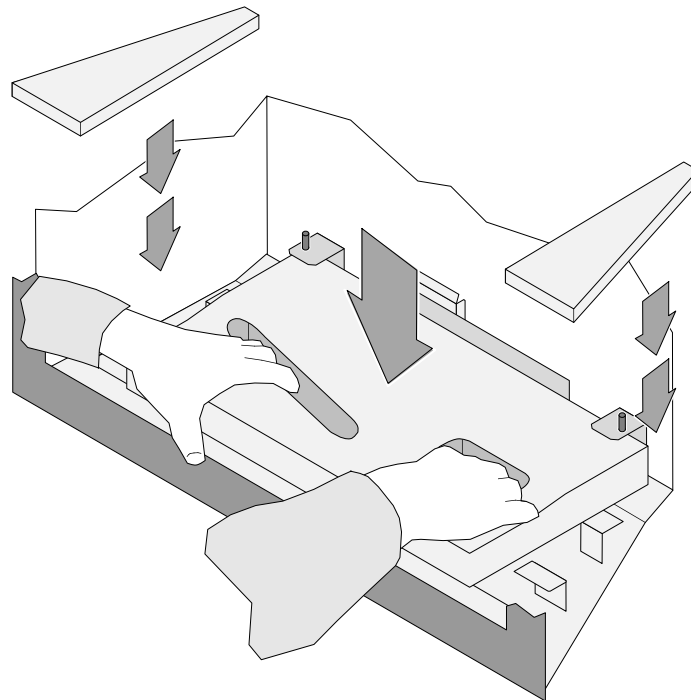
Burner Installation

1. Access the firebox.
2. Remove and discard the air shield for LP; leave the air shield in place for NG.



3. Install the burner. Install the side ember trays.

NOTE: Make sure the burner is fully seated over the orifices (the burner should be aligned all the way to the right).

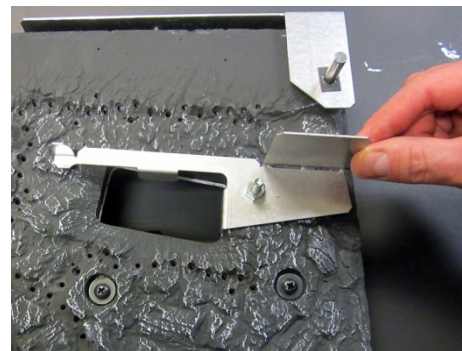
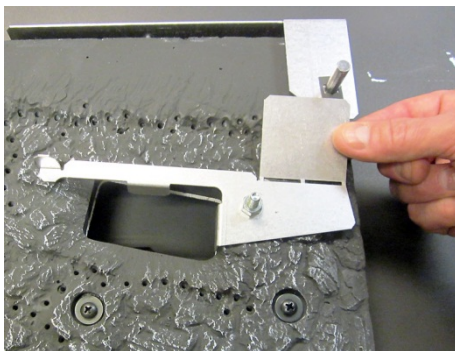


Log Set Installation

- ! **The logs are fragile, especially after being exposed to heat.**
- Make sure the gas control valve is "OFF" and the heater is cool prior to conducting service.
- Failure to position the parts in accordance with these diagrams or failure to use only parts specifically approved with this appliance may result in property damage or personal injury.
- If using propane (LP), convert the appliance before installing the logs.
- The burner must be correctly positioned before installing the logs. Make sure the burner is fully seated and the pilot is properly aligned.

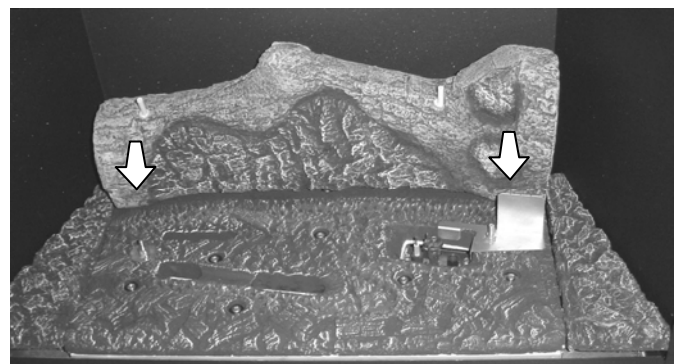
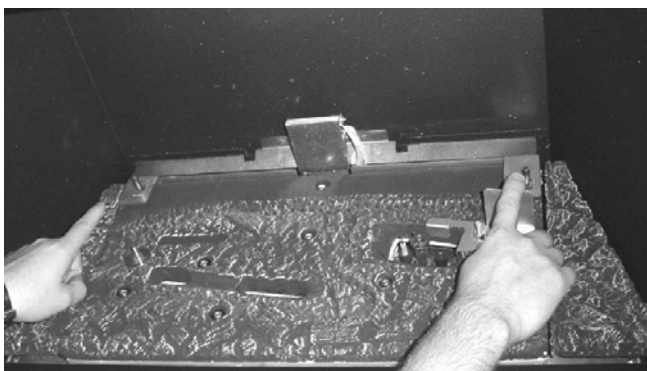
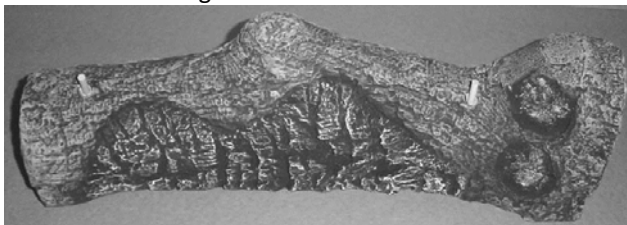
Right Log Bracket

Bend the log bracket up to 90° as shown below.



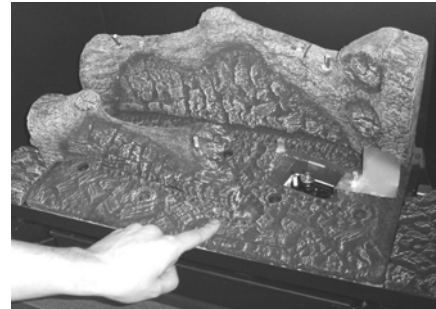
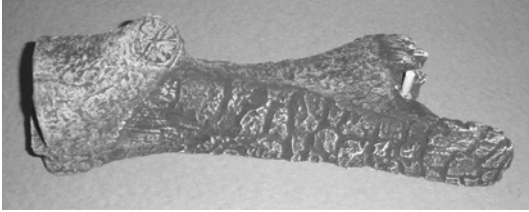
Rear Log Placement

The rear log has two obround holes on the bottom. Place the log so the pins on the burner insert into the holes on the log (see photos below). Once in place, carefully pull the log all the way forward. This allows the log to glow above the rear burner holes. NOTE: If you encounter sooting on the rear log, move the log back until sooting is eliminated.



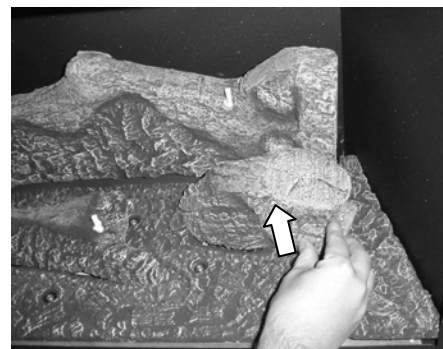
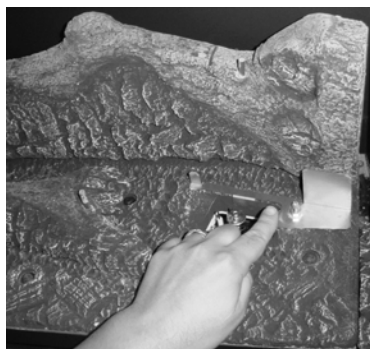
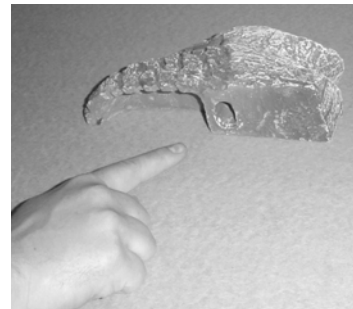
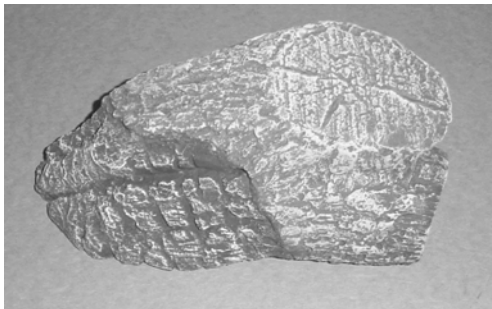
Left Log Placement

The left log has a hole on the bottom. Place the log so the pin on the burner inserts into the hole on the log (see photos below). Position the log so the right side straddles the burner holes. The log must not cover any burner holes.



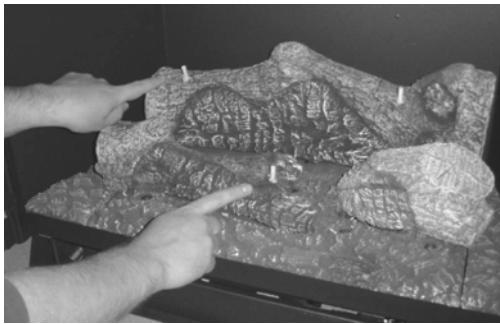
Right Log Placement

The right log has a hole on the bottom. Place the log so both burner pins insert into the holes on the log (see photos below). Make sure the log is pushed back so it sits flat.



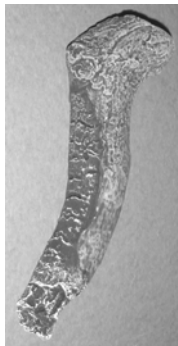
Left Twig Placement

The left twig has two holes in the bottom that fit over the pins on the back and left log (see photos below). Place the twig as shown below.



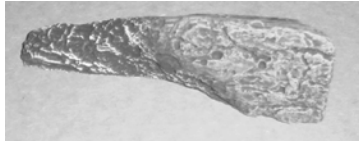
Right Twig Placement

The right twig has one hole in the bottom that fits over the pin on the back log (see photo below). The bottom of the log rests on the right log. Place the log as shown below.



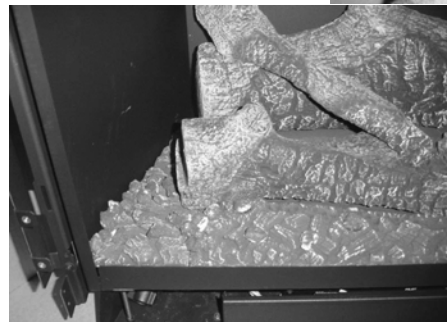
Front Ember Chunk Placement

Place the ember chunk as shown in the photos below. Make sure the ember chunks does not cover any burner holes.



Ember Placement

A bag of embers is included with your burner kit to enhance the firebox. Place a layer of embers along the edges of the burner, on top of screw-heads, and along the perimeter to enhance the aesthetics of the firebox. Do not place embers over any burner holes. See the photo below. Place a layer of embers along any visible edges of the burner.



Rockwool Installation

The included rock wool is placed on top of the burner to enhance the glow from the burner. **The rock wool works best when it is applied in a very thin, porous layer.** The best method for applying the rock wool is to brush it on to the burner. Compress a clump of rockwool between your thumb and forefinger. Use a stiff brush to apply a thin layer of rockwool fibers onto the burner. Do not use the entire bag of rockwool. Use only a small amount and save the remainder. Over-use of rockwool will diminish the glow and may cause sooting or other adverse conditions.

