

Compatibility

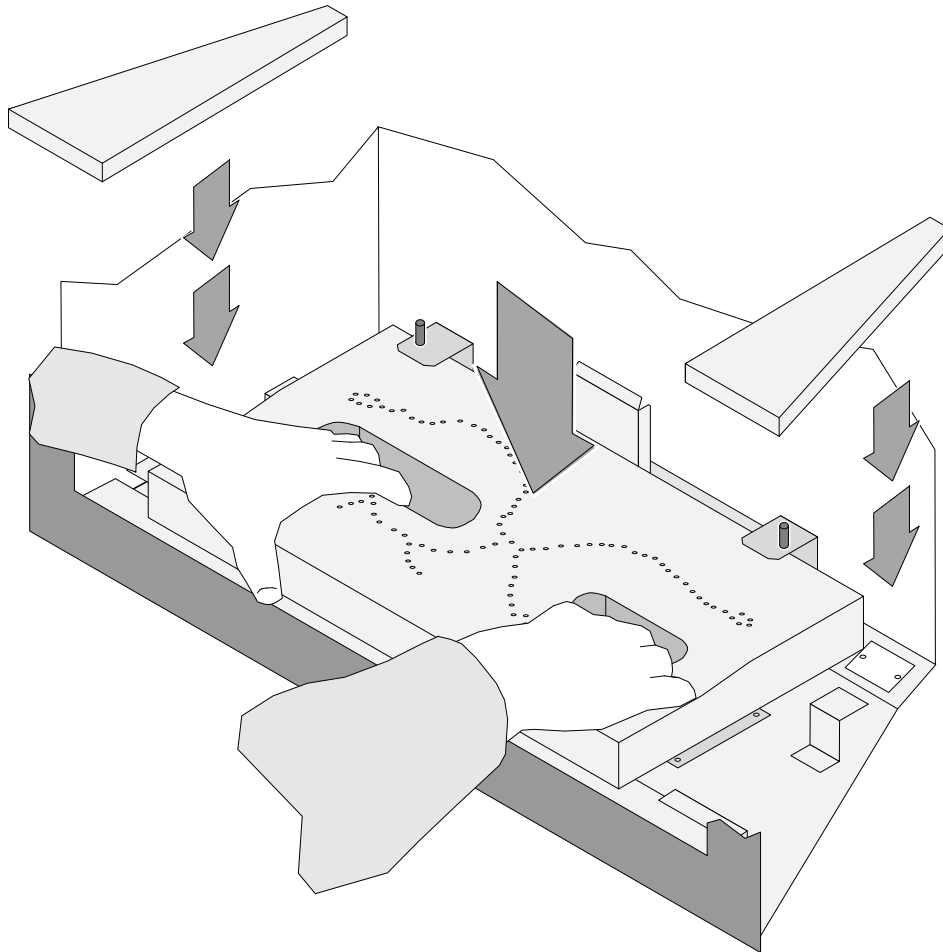
- DVS GSR NB Insert
- DVS GS (AU) Inbuilt

Packing List

- DVS Ember-Fyre Burner Assembly
- Left and Right Ember Trays
- 8-Piece Log Set
- Bag of Rock Wool
- Bag of Log Embers

Burner Installation

1. Access the firebox.
2. Install the burner as shown below (make sure the burner is fully seated over the orifices and pushed all the way to the right). Install the side ember trays.



Log Set Installation

- ! **The logs are fragile, especially after being exposed to heat.**
- Make sure the gas control valve is “OFF” and the heater is cool prior to conducting service.
- Failure to position the parts in accordance with these diagrams or failure to use only parts specifically approved with this appliance may result in property damage or personal injury.
- If using propane (LP), convert the appliance before installing the burner and logs.
- The burner must be correctly positioned before installing the logs. Make sure the burner is fully seated and the pilot is properly aligned.

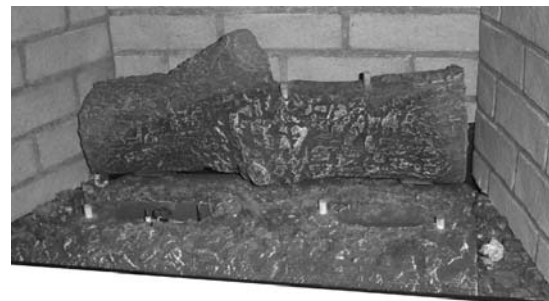
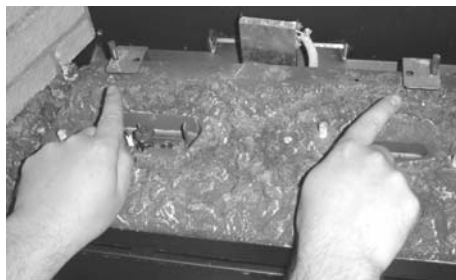
Ember Placement

Place a layer of embers along any visible edges of the burner.



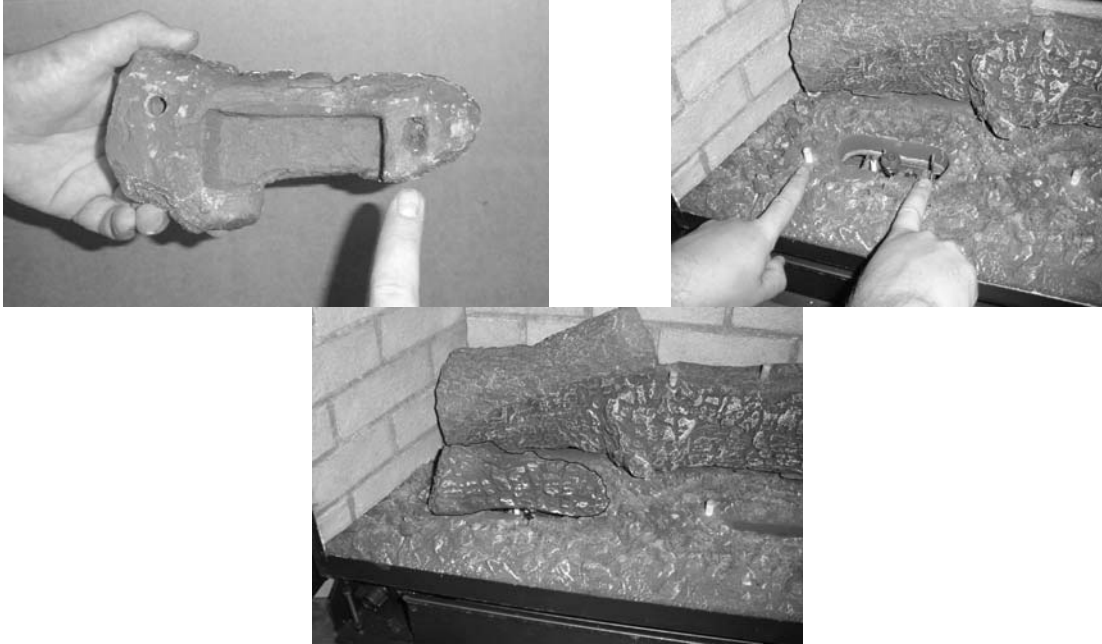
Rear Log Placement

The rear log has two holes on the bottom. Place the log so the pins on the burner insert into the holes on the log (see photos below).



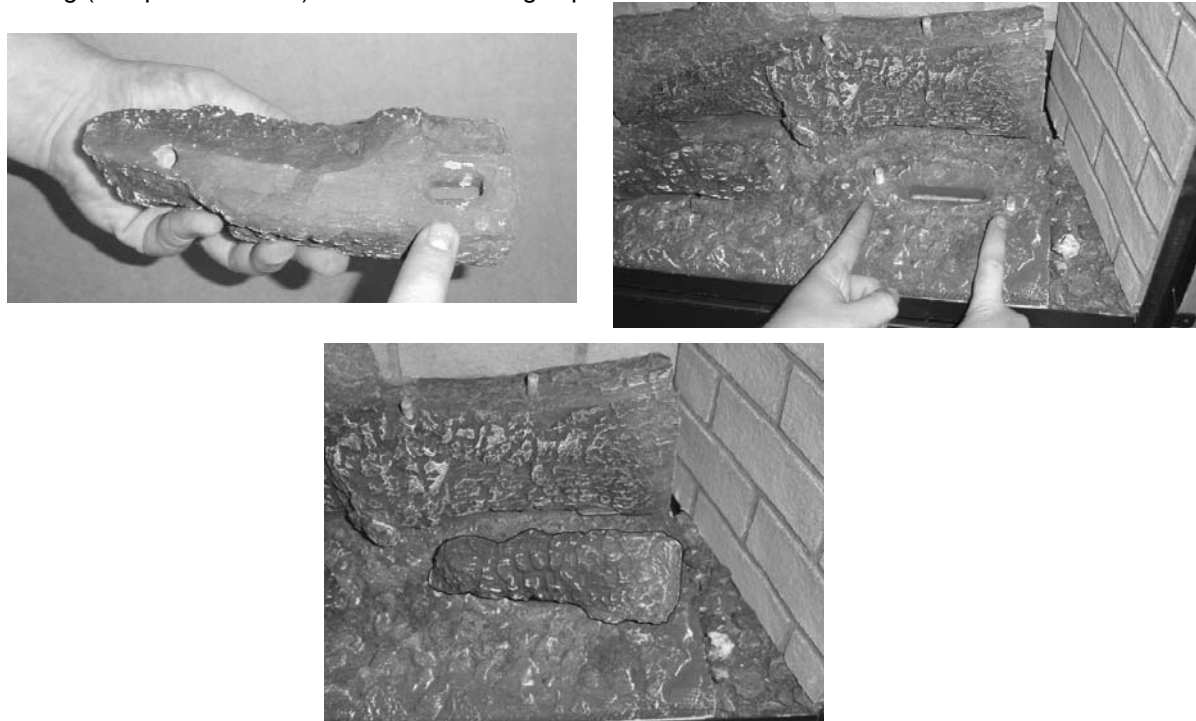
Left Log Placement

The left log has two holes on the bottom. Place the log so the pin on the burner and the metal bracket insert into the holes on the log (see photos below).



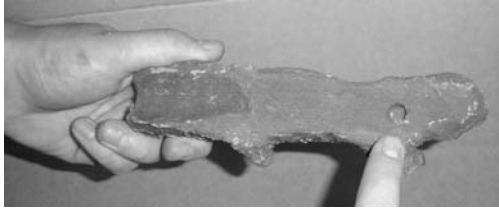
Right Log Placement

The right log has two holes on the bottom. Place the log so both burner pins insert into the holes on the log (see photos below). Make sure the log is pushed back so it sits flat.



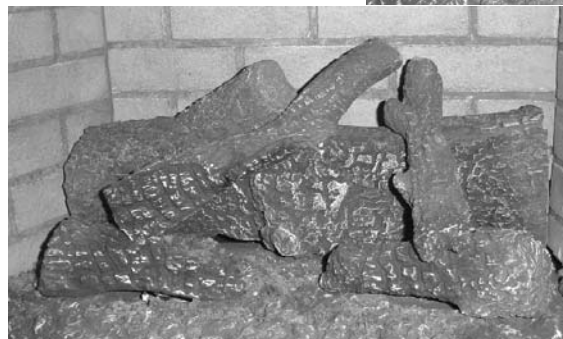
Right Twig Placement

The right twig has a single hole in the bottom that fits over the right pin on the back log (see photos below). The lower side of the twig rests on the right log. Place the twig as shown below.



Left Twig Placement

The left twig has two holes in the bottom of it – **for this model, place the log so the left pin on the rear log inserts into the lower hole** (see photo below). The bottom of the log rests on the left log. Place the log as shown below.



Front Ember Chunk Placement

This log set includes left, right, and center ember chunks (see photo below).

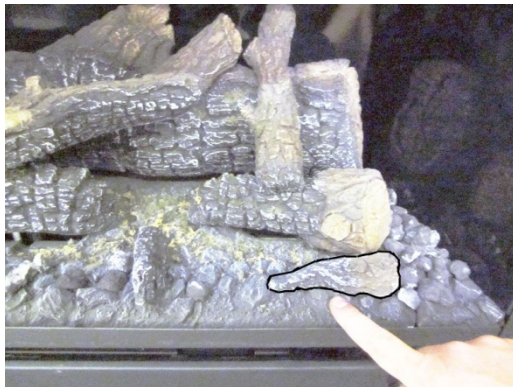


Left Ember Chunk

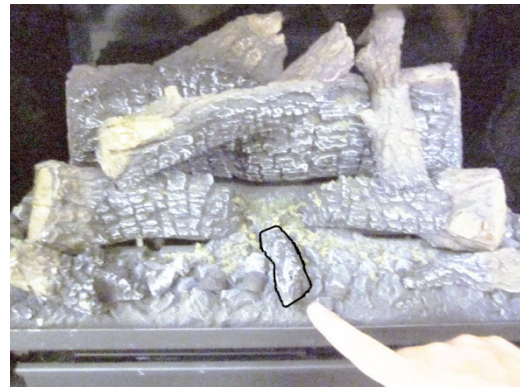
Right Ember Chunk

Center Ember Chunk

Place the ember chunks as shown in the photos below. Make sure the ember chunks do not cover any burner holes.



Right Side Ember Chunk



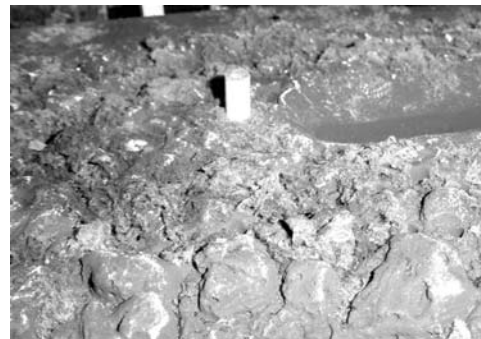
Center Ember Chunk



Left Side Ember Chunk

Rockwool Installation

The included rock wool is placed on top of the burner to enhance the glow from the burner. **The rock wool works best when it is applied in a very thin, porous layer.** The best method for applying the rock wool is to brush it on to the burner. Compress a clump of rockwool between your thumb and forefinger. Use a stiff brush to apply a thin layer of rockwool fibers onto the burner. Do not use the entire bag of rockwool. Use only a small amount and save the remainder. Over-use of rockwool will diminish the glow and may cause sooting or other adverse conditions.



The completed installation is shown below.

